

NOTAS GERAIS

1. PROJETO GEOMÉTRICO EM PLANTA SOBRE LEVANTAMENTO TOPOGRÁFICO PLANIALTIMÉTRICO DE CAMPO COM CURVAS DE NÍVEL 1/1 METRO.
2. COORDENADAS TOPOGRÁFICAS GEOREFERENCIADAS DATUM SIRGAS2000, FUSO 24, MC-39°.
3. INSTRUMENTO UTILIZADO NO LEVANTAMENTO:
 - RECEPTOR GPS GNSS L1L2 TOPOMAP T10 RTK INTEGRADO, PRECISÃO HORIZONTAL DE: 8 MM + 1 PPM RMS E VERTICAL DE: 15 MM + 1 PPM RMS
 - ESTAÇÃO TOTAL MODELO OPT-3007N PRECISÃO LINEAR DE 3 MM + 2PPM LEITURA DIRETA DE 1 SEGUNDO E PRECISÃO DE 7"
4. QUADRO DE ROTEIRO DO PERÍMETRO, COORDENADAS DO VÉRTICES REFERENTES AS DA COLUNA "DE".
5. QUADRO DE RESUMO DE ÁREAS DO LEVANTAMENTO.

Quadro de Resumo Levantamento	
Quantitativo	m²
Área do Terreno	4.980,556
Área Excedente ao Terreno	4.726,614
Área Total da Levantamento	9.707,170

LEGENDA

- * ÁRVORE
- BOCA DE LOBO EXISTENTE
- MURO EXISTENTE
- PVA
- - - - MEIO FIO EXISTENTE
- ◻ LUMINÁRIA
- POSTE
- ◻ TALUDE DE CORTE/ATERRO
- ~ CURVAS DE NÍVEL
- PORTÃO
- + NÍVEL
- - - - CANALETA
- PORTÃO
- ☒ GRELHA
- CAIXA
- VERTICES
- PVE
- ▨ EDIFICAÇÃO

01	EMISSÃO INICIAL	MAYCON	DEZ. 2019
Nº.	DESCRIÇÃO	RESP.	DATA

REVISÃO

GOVERNO DO ESTADO DO ESPÍRITO SANTO

SECRETARIA DE ESTADO DA EDUCAÇÃO - SEDU

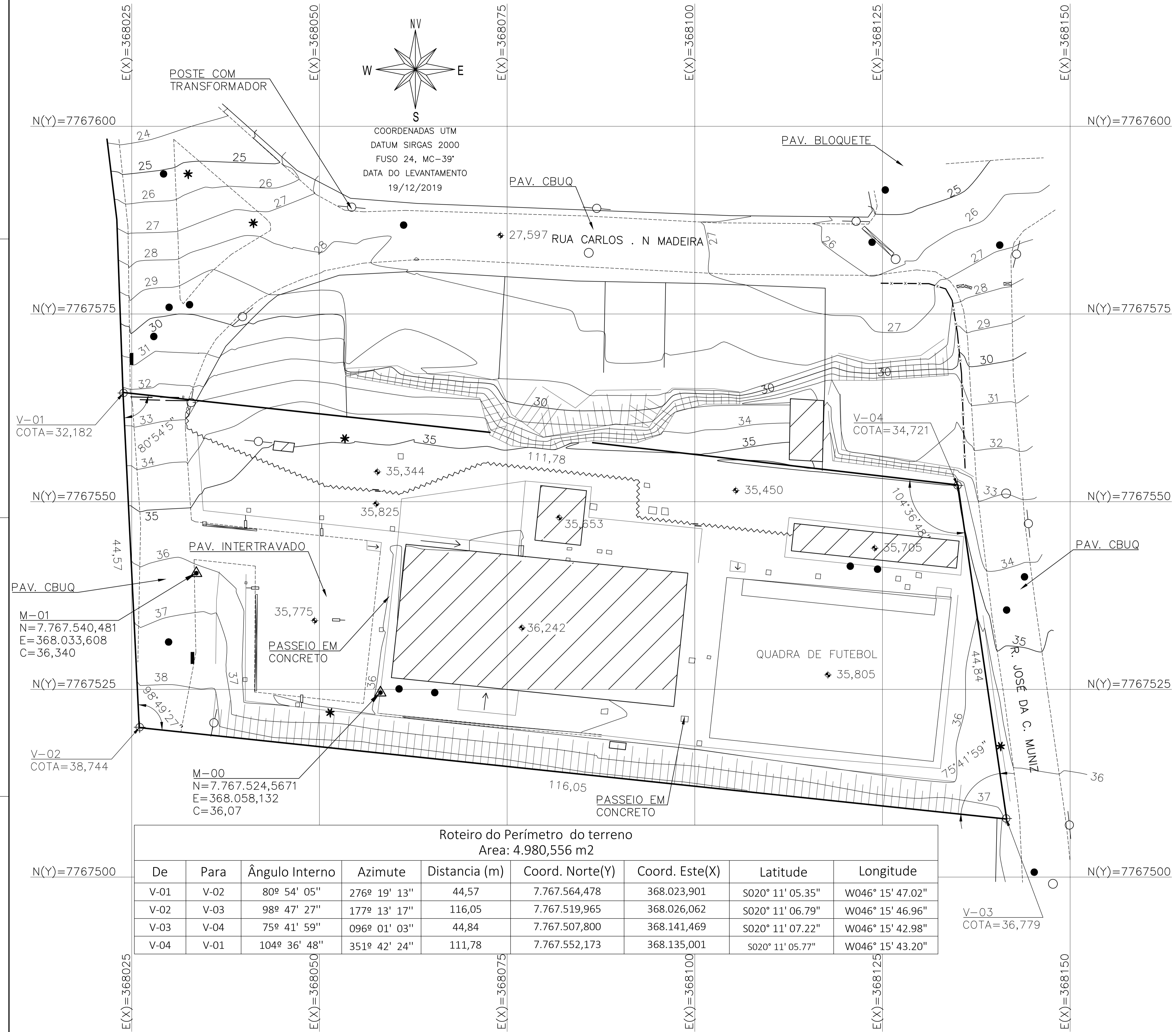
GERÊNCIA DE REDE FÍSICA ESCOLAR

TÍTULO: EEEF TAQUARA I

ENDEREÇO: RUA BEIJA-FLOR II - TAQUARA I, SERRA - ES, 29167-113

PRANCHA: TOPOGRAFIA	PROJETO: TOPOGRAFIA
SECRETÁRIO ESTADUAL: VITOR AMORIM DE ANGELO	ESCALA: 1:250
GERENTE DA GERFE: MARCELO ANDRIM GONÇALVES	UNIDADE: METROS
COORDENADOR GERAL: EDSON DE OLIVEIRA PIRES	CREA-MG: 64866/D
AUTOR PROJETO: MATEIUS COMANDUCCI FERNANDES NETO	CREA-MG: 94.896/D
CO-AUTOR PROJETO:	CAU-ES:
RESPONSÁVEL TÉCNICO: MATEIUS COMANDUCCI FERNANDES NETO	CREA-MG: 94.896/D
ARQUIVO: PRJ-PRI-TOP-0101-SEDU-EEEF_TAQUARA-I-REV00.dwg	DESENHO: EMERSON

REFERÊNCIA: LEVANTAMENTO TOPOGRAFICO PLANIALTIMETRICO CADASTRAL	ÁREAS: ÁREA DO TERRENO: 4.980,556m2 ÁREA EXISTENTE: 00,00m2 ÁREA DE REFORMA: 00,00m2 ÁREA DE AMPLIAÇÃO: 00,00m2 ÁREA DE CONSTRUÇÃO: 800,490m2	FOLHA: 01/01
FORMATO: A1	OBSERVAÇÕES:	DATA: 23/12/2019
		REVISÃO: R-00



COORDENADAS UTM
DATUM SIRGAS 2000
FUSO 24, MC-39°
DATA DO LEVANTAMENTO
19/12/2019

Roteiro do Perímetro do terreno
Area: 4.980,556 m2

De	Para	Ângulo Interno	Azimute	Distancia (m)	Coord. Norte(Y)	Coord. Este(X)	Latitude	Longitude
V-01	V-02	80° 54' 05"	276° 19' 13"	44,57	7.767.564,478	368.023,901	S020° 11' 05.35"	W046° 15' 47.02"
V-02	V-03	98° 47' 27"	177° 13' 17"	116,05	7.767.519,965	368.026,062	S020° 11' 06.79"	W046° 15' 46.96"
V-03	V-04	75° 41' 59"	096° 01' 03"	44,84	7.767.507,800	368.141,469	S020° 11' 07.22"	W046° 15' 42.98"
V-04	V-01	104° 36' 48"	351° 42' 24"	111,78	7.767.552,173	368.135,001	S020° 11' 05.77"	W046° 15' 43.20"

2020-DONACX - E-DOCS - DOCUMENTO ORIGINAL 01/04/2020 10:04 PÁGINA 1 / 24

Estação	Descrição	HI	Norte	Este	Cota	Azimute
M0	E	1,465	7.767.524,5670	368.058,1320	36,0710	

Tipo	Nome	Descrição	AHD	AVD	HS	DI	DH	EC	DHxC
Ré	E0		0°00'00"	90°29'32"	1,580	14,2830	14,2820		
Irradiado	1	MF	36°50'01"	90°13'31"	1,580	30,5070	30,5070		
Irradiado	2	MF-BL	13°32'07"	86°37'15"	1,580	25,2000	25,1560		
Irradiado	3	BL	13°01'52"	86°35'53"	1,580	25,6240	25,5790		
Irradiado	4	BL	10°59'00"	86°23'19"	1,580	25,6880	25,6370		
Irradiado	5	F	11°52'25"	86°25'26"	2,230	25,5260	25,4770		
Irradiado	6	MF	46°35'54"	91°22'03"	2,230	23,7070	23,7010		
Irradiado	7	MF	46°36'51"	91°21'29"	1,580	23,7070	23,7000		
Irradiado	8	POSF	39°06'39"	90°53'27"	1,580	22,7780	22,7750		
Irradiado	9	CXEN	40°35'52"	90°47'37"	1,580	23,3210	23,3180		
Irradiado	10	CXEN	40°02'32"	90°47'37"	1,580	23,1700	23,1680		
Irradiado	11	CXEN	40°26'15"	90°49'37"	1,580	22,9310	22,9290		
Irradiado	12	MF	350°04'36"	84°19'31"	1,580	27,2450	27,1120		
Irradiado	13	POSF	4°48'44"	90°10'26"	1,580	18,2220	18,2220		
Irradiado	14	CXEN	6°46'23"	90°18'59"	1,580	18,1500	18,1490		
Irradiado	15	MUR	353°08'02"	85°04'56"	1,580	32,5190	32,3990		
Irradiado	16	MF	1°35'36"	90°55'24"	1,580	16,7830	16,7800		
Irradiado	17	MF-BL	9°59'11"	87°19'20"	1,580	32,3890	32,3540		
Irradiado	18	MF-BL	8°28'01"	87°05'33"	1,580	32,6120	32,5700		
Irradiado	19	MF-BL	8°39'28"	87°07'16"	1,580	32,2580	32,2170		
Irradiado	20	F	9°21'34"	87°13'02"	1,780	32,3140	32,2750		
Irradiado	21	MUR	8°20'49"	86°59'03"	1,580	32,7770	32,7310		
Irradiado	22	MUR	27°45'39"	89°45'50"	1,580	36,9090	36,9080		
Irradiado	23	PVE	14°44'27"	87°05'51"	1,580	29,0520	29,0150		
Irradiado	24	MUR	347°22'31"	83°16'50"	1,580	23,4020	23,2410		
Irradiado	25	POSC	351°00'34"	83°35'43"	1,580	22,8270	22,6840		
Irradiado	26	COT	357°48'50"	90°13'46"	1,580	18,0450	18,0440		
Irradiado	27	COT	11°13'32"	85°41'02"	1,580	22,3410	22,2780		
Irradiado	28	COT	12°14'31"	90°29'07"	1,580	18,3380	18,3370		
Irradiado	29	COT	30°43'05"	87°58'55"	1,580	25,0880	25,0720		
Irradiado	30	COT	33°26'44"	90°09'04"	1,580	21,2090	21,2080		
Irradiado	31	COT	38°09'14"	89°57'56"	1,580	26,8320	26,8320		
Irradiado	32	COT	42°40'36"	90°13'59"	1,580	23,8580	23,8580		
Irradiado	33	CXA	44°43'05"	90°45'05"	1,580	32,4970	32,4940		
Irradiado	34	F	44°41'36"	90°45'26"	2,110	32,4890	32,4860		
Irradiado	35	MF	58°36'22"	90°59'27"	1,580	25,5820	25,5790		
Irradiado	36	GRE	45°10'16"	90°45'40"	1,580	32,2340	32,2310		
Irradiado	37	F	45°10'16"	90°45'41"	1,810	32,2220	32,2190		
Irradiado	38	MF-RAM	86°14'48"	90°47'12"	1,580	20,3490	20,3470		
Irradiado	39	RAM	85°51'52"	90°53'36"	1,580	19,1150	19,1130		
Irradiado	40	MF-RAM	91°41'18"	90°18'08"	1,580	19,9950	19,9950		
Irradiado	41	MF-RAM	91°15'49"	90°20'42"	1,580	18,7950	18,7950		
Irradiado	42	GRE	54°02'45"	90°42'52"	1,580	27,1910	27,1890		
Irradiado	43	F	54°03'01"	91°08'23"	1,810	27,0790	27,0740		
Irradiado	44	F	45°23'38"	91°09'46"	1,580	32,2130	32,2070		
Irradiado	45	F	54°09'27"	91°09'56"	1,580	27,1280	27,1230		

Estação	Descrição	HI	Norte	Este	Cota	Azimute
M0	E	1,465	7.767.524,5670	368.058,1320	36,0710	

Tipo	Nome	Descrição	AHD	AVD	HS	DI	DH	EC	DHxC
Irradiado	46	MF	86°42'32"	91°24'09"	1,580	11,0510	11,0480		
Irradiado	47	F	39°36'39"	91°10'45"	1,580	21,0310	21,0270		
Irradiado	48	GRE	39°42'09"	90°43'49"	1,580	21,0580	21,0570		
Irradiado	49	MF	328°57'03"	95°11'50"	1,580	2,6980	2,6870		
Irradiado	50	F	2°06'35"	90°44'05"	1,580	16,5960	16,5950		
Irradiado	51	GRE	2°08'12"	90°16'47"	1,580	16,6110	16,6110		
Irradiado	52	POSF	53°58'14"	90°44'26"	1,580	29,6880	29,6850		
Irradiado	53	CXEN	55°25'13"	90°37'00"	1,580	29,9810	29,9790		
Irradiado	54	CXEN	352°58'28"	89°26'30"	1,580	11,1850	11,1840		
Irradiado	55	POSF	350°35'22"	89°27'17"	1,580	10,7060	10,7050		
Irradiado	56	POSF	72°11'02"	90°34'10"	1,580	23,9210	23,9200		
Irradiado	57	CXEN	72°40'54"	90°30'25"	1,580	24,5720	24,5710		
Irradiado	58	ARV	339°35'03"	86°42'03"	1,580	7,2820	7,2700		
Irradiado	59	MUR	336°09'30"	81°32'38"	1,580	15,4690	15,3010		
Irradiado	60	TES	101°03'45"	90°08'28"	1,580	20,0540	20,0540		
Irradiado	61	CX	94°42'16"	90°17'11"	1,580	21,5810	21,5810		
Irradiado	62	CX	94°43'43"	90°18'15"	1,580	22,1970	22,1970		
Irradiado	63	CX	96°14'48"	90°18'21"	1,580	22,1740	22,1740		
Irradiado	64	COT	99°42'43"	89°45'33"	1,580	17,7200	17,7200		
Irradiado	65	COT	94°33'00"	90°20'55"	1,580	17,4310	17,4310		
Irradiado	66	MUR	279°12'17"	71°44'36"	1,580	8,3800	7,9580		
Irradiado	67	COT	107°42'48"	88°54'11"	1,580	3,9160	3,9150		
Irradiado	68	COT	83°48'48"	91°05'42"	1,580	4,2400	4,2390		
Irradiado	69	COT	341°54'42"	88°49'32"	1,580	7,2240	7,2230		
Irradiado	70	CX	90°19'21"	90°38'46"	1,580	8,6550	8,6540		
Irradiado	71	CX	90°11'45"	90°38'49"	1,580	8,1290	8,1290		
Irradiado	72	CX	93°59'16"	90°38'58"	1,580	8,0590	8,0590		
Irradiado	73	COT	282°12'46"	88°42'16"	1,580	3,0540	3,0540		
Irradiado	74	TES	127°18'37"	87°22'41"	1,580	2,4800	2,4770		
Irradiado	75	PVE	169°49'58"	87°00'01"	1,580	2,5310	2,5280		
Irradiado	76	PVE	181°13'14"	89°03'46"	1,580	7,2340	7,2330		
Irradiado	77	MUR	216°17'53"	81°30'02"	1,580	16,3260	16,1470		
Irradiado	78	CAL	272°57'30"	88°47'58"	1,580	2,9020	2,9020		
Irradiado	79	MUR	203°15'36"	85°42'33"	1,580	28,7710	28,6900		
Irradiado	80	CAL	195°45'02"	90°07'32"	1,580	18,9110	18,9110		
Irradiado	81	RAM	193°44'23"	89°22'41"	1,580	10,5480	10,5480		
Irradiado	82	RAM	174°59'52"	89°13'21"	1,580	10,7350	10,7340		
Irradiado	83	RAM	190°52'59"	89°43'15"	1,580	18,2350	18,2350		
Irradiado	84	RAM	180°01'50"	89°33'46"	1,580	18,4110	18,4100		
Irradiado	85	MUR	198°06'57"	87°02'48"	1,580	41,9480	41,8920		
Irradiado	86	SOL	178°30'02"	88°54'57"	1,580	15,0910	15,0880		
Irradiado	87	MUR	195°27'36"	87°56'41"	1,580	55,2500	55,2140		
Irradiado	88	CAL	192°17'02"	90°10'10"	1,580	29,9870	29,9870		
Irradiado	89	MUR	193°40'40"	88°04'19"	2,450	70,3340	70,2950		
Irradiado	90	TES	193°16'13"	89°43'54"	1,580	31,2610	31,2600		
Irradiado	91	TES	194°53'29"	89°23'52"	1,580	31,3440	31,3420		

Estação	Descrição	HI	Norte	Este	Cota	Azimute
M0	E	1,465	7.767.524,5670	368.058,1320	36,0710	

Tipo	Nome	Descrição	AHD	AVD	HS	DI	DH	EC	DHxC
Irradiado	92	TES	192°54'14"	89°47'51"	1,580	33,4180	33,4170		
Irradiado	93	MUR	192°34'41"	88°42'16"	2,450	84,6330	84,6110		
Irradiado	94	CX	185°36'38"	89°50'18"	1,580	29,5220	29,5210		
Irradiado	95	CX	186°48'06"	89°50'25"	1,580	29,5080	29,5080		
Irradiado	96	CX	186°48'06"	89°52'29"	1,580	30,1250	30,1250		
Irradiado	97	CX	185°19'29"	89°52'30"	1,580	30,3850	30,3850		
Irradiado	98	CX	186°41'40"	89°52'30"	1,580	30,3840	30,3840		
Irradiado	99	CX	186°47'03"	89°52'26"	1,580	31,1190	31,1190		
Irradiado	100	CX	186°47'07"	90°04'46"	1,580	40,2110	40,2110		
Irradiado	101	CX	185°43'15"	90°05'41"	1,580	40,1790	40,1790		
Irradiado	102	CX	185°43'46"	90°07'18"	1,580	41,1450	41,1450		
Irradiado	103	MUR	190°05'25"	89°38'10"	1,580	83,4680	83,4660		
Irradiado	104	TES	184°00'47"	90°03'30"	1,580	39,1180	39,1180		
Irradiado	105	COT	190°06'28"	89°58'04"	1,580	77,4310	77,4310		
Irradiado	106	COT	190°52'05"	89°56'48"	1,580	60,7320	60,7320		
Irradiado	107	COT	191°26'10"	89°57'56"	1,580	42,8900	42,8900		
Irradiado	108	PAS	189°55'05"	90°04'35"	1,580	57,8890	57,8890		
Irradiado	109	PAS	190°54'48"	90°05'59"	1,580	42,8670	42,8670		
Irradiado	110	PAS	192°43'55"	89°53'42"	1,580	26,7040	26,7040		
Irradiado	111	CXEN	190°28'53"	90°04'54"	1,580	43,0910	43,0910		
Irradiado	112	PAS	201°04'06"	89°25'51"	1,580	11,5560	11,5550		
Irradiado	113	PAS	278°58'14"	85°23'44"	1,580	2,7690	2,7610		
Irradiado	114	QUA	189°07'37"	90°07'20"	1,580	44,2320	44,2320		
Irradiado	115	PAS	98°01'09"	88°40'41"	1,580	8,1030	8,1010		
Irradiado	116	PAS	97°46'49"	89°34'10"	1,580	19,2170	19,2170		
Irradiado	117	PAS	101°16'04"	89°28'17"	1,580	19,3180	19,3180		
Irradiado	118	CER	76°54'08"	90°45'03"	1,580	28,3570	28,3550		
Irradiado	119	CER	97°16'17"	90°51'35"	1,580	26,6550	26,6520		
Irradiado	120	TES	71°19'07"	91°21'04"	1,580	34,0960	34,0860		
Irradiado	121	TES	67°24'12"	91°16'44"	1,580	35,3630	35,3540		
Irradiado	122	TES	72°16'36"	90°04'18"	2,600	35,1330	35,1330		
Irradiado	123	POSC	65°22'09"	89°43'34"	3,100	37,2030	37,2030		
Irradiado	124	POSC	57°58'53"	92°10'10"	3,100	46,0150	45,9820		
Irradiado	125	MUR	58°55'54"	91°44'17"	3,100	45,7160	45,6950		
Irradiado	126	MUR	100°32'31"	91°52'58"	1,580	35,8230	35,8040		
Irradiado	127	MUR	75°40'26"	89°47'41"	3,100	38,5280	38,5280		
Irradiado	128	MF	189°32'28"	88°07'30"	4,200	85,5480	85,5020		
Irradiado	129	MF	192°18'39"	88°00'42"	4,200	86,7780	86,7250		
Irradiado	130	PE	191°08'52"	87°53'46"	4,200	85,7510	85,6930		
Irradiado	131	CR	191°05'29"	87°38'51"	4,200	85,1840	85,1120		
Irradiado	132	MUR	192°40'31"	87°40'52"	4,200	85,0770	85,0070		
Irradiado	133	MUR	192°47'48"	87°17'49"	4,200	83,9010	83,8080		
Irradiado	134	CR	186°47'27"	88°06'17"	3,700	83,3010	83,2550		
Irradiado	135	ARV	186°16'10"	88°07'17"	3,700	82,9040	82,8590		
Irradiado	136	MF-POS	192°16'28"	87°52'27"	4,600	93,1470	93,0830		
Auxiliar	E1	A	191°00'30"	90°01'49"	1,580	43,8170	43,8170		

Estação	Descrição	HI	Norte	Este	Cota	Azimute
M0	E	1,465	7.767.524,5670	368.058,1320	36,0710	

Tipo	Nome	Descrição	AHD	AVD	HS	DI	DH	EC	DHxC
Irradiado	137	BL	54°32'49"	92°44'34"	4,100	55,4240	55,3600		
Irradiado	138	MF	51°38'53"	92°36'38"	3,100	52,2920	52,2380		
Irradiado	139	MUR	50°40'50"	92°27'17"	3,100	52,6280	52,5800		
Irradiado	140	PVE	58°49'19"	92°26'11"	4,600	56,2790	56,2290		
Irradiado	141	PORTAO	51°07'33"	92°52'13"	2,600	51,6200	51,5550		
Irradiado	142	PORTAO	53°52'46"	92°58'33"	2,600	49,2140	49,1480		
Irradiado	143	PORTAO	57°48'17"	92°19'40"	3,100	46,4830	46,4450		

Estação	Descrição	HI	Norte	Este	Cota	Azimute
E1	E	1,538				

Tipo	Nome	Descrição	AHD	AVD	HS	DI	DH	EC	DHxC
Ré	M0		0°00'00"	89°50'47"	1,580	43,8210	43,8210		
Irradiado	144	QUA	173°38'05"	90°09'18"	1,580	30,5050	30,5050		
Irradiado	145	PAS	175°14'22"	90°22'34"	1,580	31,5190	31,5190		
Irradiado	146	CX	69°49'30"	90°16'35"	1,580	11,5600	11,5600		
Irradiado	147	CX	73°17'19"	90°16'35"	1,580	11,4020	11,4020		
Irradiado	148	CX	74°15'19"	90°18'18"	1,580	12,0400	12,0390		
Irradiado	149	CX	83°56'28"	90°20'02"	1,580	11,8900	11,8890		
Irradiado	150	CX	81°40'22"	90°20'00"	1,580	11,9310	11,9310		
Irradiado	151	CX	82°03'48"	90°20'04"	1,580	12,3350	12,3350		
Irradiado	152	TES	74°48'23"	89°58'41"	1,580	23,4190	23,4190		
Irradiado	153	QUA	87°38'27"	90°10'27"	1,580	22,9180	22,9180		
Irradiado	154	QUA	138°49'42"	88°43'29"	2,600	38,5290	38,5200		
Irradiado	155	ARQ	140°12'58"	88°28'47"	2,600	35,3670	35,3540		
Irradiado	156	ARQ	137°28'01"	88°29'54"	2,600	36,7430	36,7300		
Irradiado	157	RAM	137°26'01"	88°13'03"	3,100	39,1390	39,1200		
Irradiado	158	RAM	139°03'43"	87°53'17"	3,100	38,2590	38,2330		
Irradiado	159	RAM-PAS	137°12'35"	87°45'14"	3,100	36,7280	36,7000		
Irradiado	160	RAM	135°33'20"	88°08'58"	3,100	37,6610	37,6410		
Irradiado	161	PAS	136°07'57"	88°02'43"	3,100	37,2330	37,2110		
Irradiado	162	PAS	151°57'58"	87°38'27"	3,100	34,6010	34,5720		
Irradiado	163	MUR	153°57'44"	87°14'51"	3,100	38,6270	38,5830		
Irradiado	164	MUR	140°09'58"	88°02'59"	3,100	41,2110	41,1870		
Auxiliar	E2	A	83°59'22"	90°12'40"	1,580	23,9970	23,9970		

Estação	Descrição	HI	Norte	Este	Cota	Azimute
E2	E	1,571				

Tipo	Nome	Descrição	AHD	AVD	HS	DI	DH	EC	DHxC
Ré	E1		0°00'00"	89°47'45"	1,580	23,9830	23,9820		
Irradiado	165	ARQ	286°53'38"	90°07'59"	1,580	3,8590	3,8590		
Irradiado	166	ARQ	313°08'20"	89°56'54"	1,580	4,9210	4,9210		
Irradiado	167	RAM-PAS	273°48'37"	91°55'49"	1,580	3,8570	3,8550		
Irradiado	168	RAM	257°50'03"	93°10'29"	1,580	3,9100	3,9040		
Irradiado	169	RAM	238°09'23"	95°49'51"	1,580	2,1860	2,1750		

Estação	Descrição	HI	Norte	Este	Cota	Azimute
E2	E	1,571				

Tipo	Nome	Descrição	AHD	AVD	HS	DI	DH	EC	DHxC
Irradiado	170	RAM-PAS	258°13'24"	94°44'32"	1,580	1,8660	1,8600		
Irradiado	171	TES	253°08'42"	90°38'45"	1,580	10,2560	10,2560		
Irradiado	172	PAS	256°55'48"	91°14'16"	1,580	9,2170	9,2150		
Irradiado	173	PAS	103°08'36"	92°58'39"	1,580	2,5140	2,5110		
Irradiado	174	PAS	156°35'51"	93°42'24"	1,580	5,6030	5,5910		
Irradiado	175	TES	266°16'45"	90°12'12"	1,580	31,9810	31,9810		
Irradiado	176	PAS	108°04'46"	90°40'18"	1,580	18,3080	18,3060		
Irradiado	177	PAS	119°27'07"	90°24'08"	1,580	19,8580	19,8580		
Irradiado	178	TES	117°09'59"	90°17'18"	1,580	20,1500	20,1500		
Irradiado	179	CXE	113°37'10"	90°31'26"	1,580	18,8670	18,8670		
Irradiado	180	CXE	114°30'49"	90°32'24"	1,580	18,0320	18,0310		
Irradiado	181	CXE	112°10'45"	90°32'27"	1,580	17,7310	17,7300		
Irradiado	182	TES	95°56'25"	90°29'02"	1,580	18,3310	18,3300		
Irradiado	183	PAS	267°54'47"	90°13'45"	1,580	32,5930	32,5930		
Irradiado	184	PAS	272°36'19"	90°09'06"	1,580	32,3920	32,3920		
Irradiado	185	CER	243°04'33"	90°34'55"	1,580	11,0680	11,0680		
Irradiado	186	CX	95°50'49"	90°43'25"	1,580	14,1110	14,1100		
Irradiado	187	CX	94°00'47"	90°40'21"	1,580	14,0510	14,0500		
Irradiado	188	CX	93°57'52"	90°35'47"	1,580	14,0570	14,0560		
Irradiado	189	CX	93°51'55"	90°33'01"	1,580	15,3810	15,3800		
Irradiado	190	CX	93°49'09"	90°36'47"	1,580	16,0130	16,0120		
Irradiado	191	CX	95°19'23"	90°36'50"	1,580	16,0330	16,0320		
Irradiado	192	CXE	269°02'54"	90°33'05"	1,580	27,3510	27,3500		
Irradiado	193	CXE	268°52'26"	90°33'06"	1,580	26,5980	26,5970		
Irradiado	194	CXE	267°25'32"	90°33'05"	1,580	26,6290	26,6280		
Irradiado	195	CXEN	271°53'56"	90°37'31"	1,580	25,5910	25,5890		
Irradiado	196	CXE	270°20'18"	90°37'26"	1,580	24,5800	24,5790		
Irradiado	197	CXE	270°17'14"	90°34'09"	1,580	23,9200	23,9190		
Irradiado	198	CXE	268°46'20"	90°34'07"	1,580	23,9680	23,9670		
Irradiado	199	PVE	266°36'02"	90°28'57"	1,580	21,4750	21,4740		
Irradiado	200	PVE	265°22'04"	90°28'56"	1,580	17,8440	17,8430		
Irradiado	201	CXEN	271°21'25"	90°30'13"	1,580	13,6740	13,6740		
Irradiado	202	CXEN	270°50'45"	89°48'05"	1,580	6,9640	6,9640		
Irradiado	203	TES	95°08'28"	90°24'35"	1,580	24,4580	24,4570		
Irradiado	204	ESC	92°59'52"	89°57'43"	1,580	25,8330	25,8330		
Irradiado	205	ESC	89°46'20"	89°53'53"	1,580	25,8170	25,8170		
Irradiado	206	ESC	89°55'55"	89°09'46"	1,580	26,4300	26,4280		
Irradiado	207	ESC	92°49'43"	89°12'05"	1,580	26,4580	26,4550		
Irradiado	208	RAM	90°09'20"	89°17'38"	1,580	29,9770	29,9750		
Irradiado	209	RAM	90°30'48"	89°56'52"	1,580	36,2760	36,2760		
Irradiado	210	RAM	92°44'22"	89°56'49"	1,580	36,2850	36,2850		
Irradiado	211	CXE	90°14'13"	89°50'54"	1,580	19,5100	19,5100		
Irradiado	212	CXE	90°20'08"	89°50'55"	1,580	20,0250	20,0240		
Irradiado	213	CXE	89°10'04"	89°50'56"	1,580	20,0870	20,0870		
Irradiado	214	CXE	93°29'40"	90°27'01"	1,580	19,4060	19,4060		
Irradiado	215	CXE	93°19'46"	90°26'57"	1,580	20,0410	20,0410		

Estação	Descrição	HI	Norte	Este	Cota	Azimute
E2	E	1,571				

Tipo	Nome	Descrição	AHD	AVD	HS	DI	DH	EC	DHxC
Irradiado	216	CXE	94°13'38"	90°26'55"	1,580	20,0410	20,0410		
Irradiado	217	PAS	92°49'38"	90°10'05"	1,580	42,5960	42,5950		

Nome	Descrição	Norte	Este	Cota
M0	E	7.767,524,5670	368.058,1320	36,0710

Nome	Descrição	Norte	Este	Cota	Azimute	AH	DH	Desnível
E1	A	7.517,1776	8.101,3214	35,9330	99°42'32"	191°00'30"	43,8170	-0,1380
1	MF	7.542,2973	8.033,3064	35,8361	305°32'03"	36°50'01"	30,5070	-0,2349
2	MF-BL	7.529,8985	8.033,5475	37,4414	282°14'09"	13°32'07"	25,1560	1,3704
3	BL	7.529,7680	8.033,0873	37,4766	281°43'54"	13°01'52"	25,5790	1,4056
4	BL	7.528,8795	8.032,8603	37,5741	279°41'02"	10°59'00"	25,6370	1,5031
5	F	7.529,2423	8.033,0876	36,8982	280°34'27"	11°52'25"	25,4770	0,8272
6	MF	7.541,4133	8.041,4605	34,7403	315°17'56"	46°35'54"	23,7010	-1,3307
7	MF	7.541,4172	8.041,4659	35,3942	315°18'53"	46°36'51"	23,7000	-0,6768
8	POSF	7.538,5295	8.040,1390	35,6019	307°48'41"	39°06'39"	22,7750	-0,4691
9	CXEN	7.539,3357	8.040,0872	35,6330	309°17'54"	40°35'52"	23,3180	-0,4380
10	CXEN	7.539,0661	8.040,0618	35,6351	308°44'34"	40°02'32"	23,1680	-0,4359
11	CXEN	7.539,0396	8.040,3477	35,6251	309°08'17"	40°26'15"	22,9290	-0,4459
12	MF	7.519,2904	8.031,5384	38,6501	258°46'38"	350°04'36"	27,1120	2,5791
13	POSF	7.525,6835	8.039,9442	35,9007	273°30'46"	4°48'44"	18,2220	-0,1703
14	CXEN	7.526,2982	8.040,0658	35,8558	275°28'25"	6°46'23"	18,1490	-0,2152
15	MUR	7.519,9653	8.026,0615	38,7438	261°50'04"	353°08'02"	32,3990	2,6728
16	MF	7.524,6531	8.041,3522	35,6856	270°17'38"	1°35'36"	16,7800	-0,3854
17	MF-BL	7.529,4536	8.026,1492	37,4693	278°41'13"	9°59'11"	32,3540	1,3983
18	MF-BL	7.528,6308	8.025,8165	37,6103	277°10'03"	8°28'01"	32,5700	1,5393
19	MF-BL	7.528,6932	8.026,1803	37,5762	277°21'30"	8°39'28"	32,2170	1,5052
20	F	7.529,0923	8.026,1758	37,3249	278°03'36"	9°21'34"	32,2750	1,2539
21	MUR	7.528,5829	8.025,6483	37,6805	277°02'51"	8°20'49"	32,7310	1,6095
22	MUR	7.541,0130	8.025,0907	36,1082	296°27'41"	27°45'39"	36,9080	0,0372
23	PVE	7.531,3116	8.029,9118	37,4272	283°26'29"	14°44'27"	29,0150	1,3562
24	MUR	7.518,9744	8.035,5739	38,6943	256°04'33"	347°22'31"	23,2410	2,6233
25	POSC	7.520,5150	8.035,8128	38,5024	259°42'36"	351°00'34"	22,6840	2,4314
26	COT	7.523,4700	8.040,1214	35,8838	266°30'52"	357°48'50"	18,0440	-0,1872
27	COT	7.528,4073	8.036,1875	37,6374	279°55'34"	11°13'32"	22,2780	1,5664
28	COT	7.528,0478	8.040,1284	35,8007	280°56'33"	12°14'31"	18,3370	-0,2703
29	COT	7.536,8820	8.036,2929	36,8395	299°25'07"	30°43'05"	25,0720	0,7685
30	COT	7.535,8514	8.040,1753	35,9001	302°08'46"	33°26'44"	21,2080	-0,1709
31	COT	7.540,6604	8.036,6621	35,9722	306°51'16"	38°09'14"	26,8320	-0,0988
32	COT	7.540,3375	8.040,2296	35,8590	311°22'38"	42°40'36"	23,8580	-0,2120
33	CXA	7.546,9009	8.034,5300	35,5299	313°25'07"	44°43'05"	32,4940	-0,5411
34	F	7.546,8852	8.034,5261	34,9967	313°23'38"	44°41'36"	32,4860	-1,0743
35	MF	7.546,0936	8.044,3157	35,5137	327°18'24"	58°36'22"	25,5790	-0,5573
36	GRE	7.546,9046	8.034,8969	35,5279	313°52'18"	45°10'16"	32,2310	-0,5431
37	F	7.546,8962	8.034,9055	35,2979	313°52'18"	45°10'16"	32,2190	-0,7731
38	MF-RAM	7.544,8349	8.056,3400	35,6766	354°56'50"	86°14'48"	20,3470	-0,3944
39	RAM	7.543,5941	8.056,3217	35,6580	354°33'54"	85°51'52"	19,1130	-0,4130
40	MF-RAM	7.544,5615	8.058,2677	35,8506	0°23'20"	91°41'18"	19,9950	-0,2204
41	MF-RAM	7.543,3620	8.058,1203	35,8429	359°57'51"	91°15'49"	18,7950	-0,2281
42	GRE	7.546,2085	8.041,6733	35,6170	322°44'47"	54°02'45"	27,1890	-0,4540
43	F	7.546,1182	8.041,7446	35,1874	322°45'03"	54°03'01"	27,0740	-0,8836
44	F	7.546,9780	8.035,0011	35,3024	314°05'40"	45°23'38"	32,2070	-0,7686
45	F	7.546,1879	8.041,7554	35,4042	322°51'29"	54°09'27"	27,1230	-0,6668

Nome	Descrição	Norte	Este	Cota
M0	E	7.767,524,5670	368.058,1320	36,0710

Nome	Descrição	Norte	Este	Cota	Azimute	AH	DH	Desnível
46	MF	7.535,5796	8.057,2478	35,6855	355°24'34"	86°42'32"	11,0480	-0,3855
47	F	7.537,6024	8.041,6331	35,5232	308°18'41"	39°36'39"	21,0270	-0,5478
48	GRE	7.537,6474	8.041,6305	35,6876	308°24'11"	39°42'09"	21,0570	-0,3834
49	MF	7.523,1293	8.055,8620	35,7116	237°39'05"	328°57'03"	2,6870	-0,3594
50	F	7.524,8017	8.041,5387	35,7432	270°48'37"	2°06'35"	16,5950	-0,3278
51	GRE	7.524,8097	8.041,5228	35,8749	270°50'14"	2°08'12"	16,6110	-0,1961
52	POSF	7.548,1716	8.040,1313	35,5724	322°40'16"	53°58'14"	29,6850	-0,4986
53	CXEN	7.548,8576	8.040,5620	35,6334	324°07'15"	55°25'13"	29,9790	-0,4376
54	CXEN	7.522,9477	8.047,0658	36,0650	261°40'30"	352°58'28"	11,1840	-0,0060
55	POSF	7.522,5776	8.047,6135	36,0579	259°17'24"	350°35'22"	10,7050	-0,0131
56	POSF	7.547,1681	8.050,2988	35,7183	340°53'04"	72°11'02"	23,9200	-0,3527
57	CXEN	7.547,8522	8.050,2876	35,7386	341°22'56"	72°40'54"	24,5710	-0,3324
58	ARV	7.521,8771	8.051,3779	36,3751	248°17'05"	339°35'03"	7,2700	0,3041
59	MUR	7.518,0664	8.044,2805	38,2308	244°51'32"	336°09'30"	15,3010	2,1598
60	TES	7.544,3306	8.061,5327	35,9066	9°45'47"	101°03'45"	20,0540	-0,1644
61	CX	7.546,1099	8.059,4138	35,8482	3°24'18"	94°42'16"	21,5810	-0,2228
62	CX	7.546,7243	8.059,4597	35,8382	3°25'45"	94°43'43"	22,1970	-0,2328
63	CX	7.546,6584	8.060,0443	35,8377	4°56'50"	96°14'48"	22,1740	-0,2333
64	COT	7.542,0963	8.060,7244	36,0305	8°24'45"	99°42'43"	17,7200	-0,0405
65	COT	7.541,9700	8.059,1204	35,8500	3°15'02"	94°33'00"	17,4310	-0,2210
66	MUR	7.516,6846	8.057,0375	38,5812	187°54'19"	279°12'17"	7,9580	2,5102
67	COT	7.528,3224	8.059,2383	36,0310	16°24'50"	107°42'48"	3,9150	-0,0400
68	COT	7.528,7699	8.057,5797	35,8750	352°30'50"	83°48'48"	4,2390	-0,1960
69	COT	7.522,1693	8.051,3186	36,1041	250°36'44"	341°54'42"	7,2230	0,0331
70	CX	7.533,2197	8.057,9845	35,8584	359°01'23"	90°19'21"	8,6540	-0,2126
71	CX	7.532,6945	8.057,9754	35,8642	358°53'47"	90°11'45"	8,1290	-0,2068
72	CX	7.532,6171	8.058,5100	35,8647	2°41'18"	93°59'16"	8,0590	-0,2063
73	COT	7.521,5682	8.057,5538	36,0251	190°54'48"	282°12'46"	3,0540	-0,0459
74	TES	7.526,5707	8.059,5883	36,0694	36°00'39"	127°18'37"	2,4770	-0,0016
75	PVE	7.525,0696	8.060,6095	36,0885	78°32'00"	169°49'58"	2,5280	0,0175
76	PVE	7.524,5770	8.065,3650	36,0743	89°55'16"	181°13'14"	7,2330	0,0033
77	MUR	7.515,3058	8.071,3591	38,3690	124°59'55"	216°17'53"	16,1470	2,2980
78	CAL	7.521,6662	8.058,0480	36,0168	181°39'32"	272°57'30"	2,9020	-0,0542
79	MUR	7.513,8378	8.084,7403	38,1087	111°57'38"	203°15'36"	28,6900	2,0377
80	CAL	7.519,8477	8.076,4447	35,9146	104°27'04"	195°45'02"	18,9110	-0,1564
81	RAM	7.522,2947	8.068,4323	36,0705	102°26'25"	193°44'23"	10,5480	-0,0005
82	RAM	7.525,7452	8.068,8011	36,1017	83°41'54"	174°59'52"	10,7340	0,0307
83	RAM	7.521,5311	8.076,1125	36,0449	99°35'01"	190°52'59"	18,2350	-0,0261
84	RAM	7.524,9747	8.076,5375	36,0965	88°43'52"	180°01'50"	18,4100	0,0255
85	MUR	7.512,4474	8.098,2326	38,1174	106°48'59"	198°06'57"	41,8920	2,0464
86	SOL	7.525,3037	8.073,2020	36,2416	87°12'04"	178°30'02"	15,0880	0,1706
87	MUR	7.511,0594	8.111,6683	37,9377	104°09'38"	195°27'36"	55,2140	1,8667
88	CAL	7.518,8532	8.087,5696	35,8674	100°59'04"	192°17'02"	29,9870	-0,2036
89	MUR	7.509,4981	8.126,7929	37,4527	102°22'42"	193°40'40"	70,2950	1,3817
90	TES	7.518,0832	8.088,7122	36,1025	101°58'15"	193°16'13"	31,2600	0,0315
91	TES	7.517,2014	8.088,5962	36,2855	103°35'31"	194°53'29"	31,3420	0,2145

Nome	Descrição	Norte	Este	Cota
M0	E	7.767,524,5670	368.058,1320	36,0710

Nome	Descrição	Norte	Este	Cota	Azimute	AH	DH	Desnível
92	TES	7.517,8450	8.090,8659	36,0742	101°36'16"	192°54'14"	33,4170	0,0032
93	MUR	7.508,0187	8.141,1090	37,0000	101°16'43"	192°34'41"	84,6110	0,9290
94	CX	7.522,3478	8.087,5695	36,0394	94°18'40"	185°36'38"	29,5210	-0,0316
95	CX	7.521,7376	8.087,5040	36,0383	95°30'08"	186°48'06"	29,5080	-0,0327
96	CX	7.521,6785	8.088,1182	36,0219	95°30'08"	186°48'06"	30,1250	-0,0491
97	CX	7.522,4341	8.088,4420	36,0224	94°01'31"	185°19'29"	30,3850	-0,0486
98	CX	7.521,7102	8.088,3814	36,0224	95°23'42"	186°41'40"	30,3840	-0,0486
99	CX	7.521,5926	8.089,1085	36,0246	95°29'05"	186°47'03"	31,1190	-0,0464
100	CX	7.520,7228	8.098,1588	35,9004	95°29'09"	186°47'07"	40,2110	-0,1706
101	CX	7.521,4695	8.098,1914	35,8897	94°25'17"	185°43'15"	40,1790	-0,1813
102	CX	7.521,3889	8.099,1541	35,8687	94°25'48"	185°43'46"	41,1450	-0,2023
103	MUR	7.511,8110	8.140,6175	36,4866	98°47'27"	190°05'25"	83,4660	0,4156
104	TES	7.522,7150	8.097,2061	35,9163	92°42'49"	184°00'47"	39,1180	-0,1547
105	COT	7.512,7100	8.134,6498	36,0000	98°48'30"	190°06'28"	77,4310	-0,0710
106	COT	7.514,4716	8.118,0190	36,0128	99°34'07"	190°52'05"	60,7320	-0,0582
107	COT	7.517,0185	8.100,3525	35,9819	100°08'12"	191°26'10"	42,8900	-0,0891
108	PAS	7.515,8919	8.115,3673	35,8791	98°37'07"	189°55'05"	57,8890	-0,1919
109	PAS	7.517,4078	8.100,3970	35,8815	99°36'50"	190°54'48"	42,8670	-0,1895
110	PAS	7.519,2739	8.084,3062	36,0050	101°25'57"	192°43'55"	26,7040	-0,0660
111	CXEN	7.517,6909	8.100,6709	35,8947	99°10'55"	190°28'53"	43,0910	-0,1763
112	PAS	7.520,6588	8.069,0060	36,0708	109°46'08"	201°04'06"	11,5550	-0,0002
113	PAS	7.521,8307	8.057,7634	36,1783	187°40'16"	278°58'14"	2,7610	0,1073
114	QUA	7.518,5430	8.101,9519	35,8618	97°49'39"	189°07'37"	44,2320	-0,2092
115	PAS	7.532,6123	8.059,0799	36,1429	6°43'11"	98°01'09"	8,1010	0,0719
116	PAS	7.543,6612	8.060,3011	36,1004	6°28'51"	97°46'49"	19,2170	0,0294
117	PAS	7.543,5934	8.061,4760	36,1343	9°58'06"	101°16'04"	19,3180	0,0633
118	CER	7.552,0315	8.051,0818	35,5845	345°36'10"	76°54'08"	28,3550	-0,4865
119	CER	7.551,0744	8.060,9049	35,5561	5°58'19"	97°16'17"	26,6520	-0,5149
120	TES	7.556,6013	8.046,4846	35,1521	340°01'09"	71°19'07"	34,0860	-0,9189
121	TES	7.556,8905	8.043,8108	35,1668	336°06'14"	67°24'12"	35,3540	-0,9042
122	TES	7.557,7814	8.046,6806	34,8921	340°58'38"	72°16'36"	35,1330	-1,1789
123	POSC	7.558,0247	8.041,8640	34,6139	334°04'11"	65°22'09"	37,2030	-1,4571
124	POSC	7.562,9912	8.032,8748	32,6943	326°40'55"	57°58'53"	45,9820	-3,3767
125	MUR	7.563,1623	8.033,6691	33,0496	327°37'56"	58°55'54"	45,6950	-3,0214
126	MUR	7.559,9062	8.063,8826	34,7791	9°14'33"	100°32'31"	35,8040	-1,2919
127	MUR	7.561,6711	8.047,7545	34,5741	344°22'28"	75°40'26"	38,5280	-1,4969
128	MF	7.512,3103	8.142,7509	36,1356	98°14'30"	189°32'28"	85,5020	0,0646
129	MF	7.508,0021	8.143,2603	36,3474	101°00'41"	192°18'39"	86,7250	0,2764
130	PE	7.509,9099	8.142,5622	36,4846	99°50'54"	191°08'52"	85,6930	0,4136
131	CR	7.510,0919	8.142,0041	36,8331	99°47'31"	191°05'29"	85,1120	0,7621
132	MUR	7.507,7998	8.141,4690	36,7788	101°22'33"	192°40'31"	85,0070	0,7078
133	MUR	7.507,8623	8.140,2583	37,2932	101°29'50"	192°47'48"	83,8080	1,2222
134	CR	7.516,5998	8.141,0049	36,5915	95°29'29"	186°47'27"	83,2550	0,5205
135	ARV	7.517,3885	8.140,6795	36,5542	94°58'12"	186°16'10"	82,8590	0,4832
136	MF-POS	7.506,8457	8.149,5125	36,3918	100°58'30"	192°16'28"	93,0830	0,3208
137	BL	7.568,9230	8.025,0068	30,7841	323°14'51"	54°32'49"	55,3600	-5,2869

Nome	Descrição	Norte	Este	Cota
M0	E	7.767,524,5670	368.058,1320	36,0710

Nome	Descrição	Norte	Este	Cota	Azimute	AH	DH	Desnível
138	MF	7.564,7872	8.024,7982	32,0544	320°20'55"	51°38'53"	52,2380	-4,0166
139	MUR	7.564,4782	8.023,9012	32,1821	319°22'52"	50°40'50"	52,5800	-3,8889
140	PVE	7.572,0019	8.027,9388	30,5438	327°31'21"	58°49'19"	56,2290	-5,5272
141	PORTAO	7.563,9599	8.024,8736	32,3513	319°49'35"	51°07'33"	51,5550	-3,7197
142	PORTAO	7.563,6005	8.028,2671	32,3812	322°34'48"	53°52'46"	49,1480	-3,6898
143	PORTAO	7.563,2992	8.032,5009	32,5482	326°30'19"	57°48'17"	46,4450	-3,5228

Nome	Descrição	Norte	Este	Cota
E1	E	7.767.517,1776	368.101,3214	35,9330

Nome	Descrição	Norte	Este	Cota	Azimute	AH	DH	Desnível
E2	A	7.541,1246	8.102,8693	35,8026	3°41'54"	83°59'22"	23,9970	-0,1304
144	QUA	7.515,3984	8.131,7745	35,8085	93°20'37"	173°38'05"	30,5050	-0,1245
145	PAS	7.514,4588	8.132,7229	35,6841	94°56'54"	175°14'22"	31,5190	-0,2488
146	CX	7.528,5452	8.099,2215	35,8352	349°32'02"	69°49'30"	11,5600	-0,0978
147	CX	7.528,4945	8.099,9314	35,8360	352°59'51"	73°17'19"	11,4020	-0,0970
148	CX	7.529,1498	8.100,0555	35,8269	353°57'51"	74°15'19"	12,0390	-0,1061
149	CX	7.529,0425	8.102,0783	35,8217	3°39'00"	83°56'28"	11,8890	-0,1113
150	CX	7.529,1051	8.101,6091	35,8216	1°22'54"	81°40'22"	11,9310	-0,1114
151	CX	7.529,5067	8.101,7029	35,8190	1°46'20"	82°03'48"	12,3350	-0,1140
152	TES	7.540,4894	8.099,0830	35,9000	354°30'55"	74°48'23"	23,4190	-0,0330
153	QUA	7.539,9073	8.104,2532	35,8214	7°20'59"	87°38'27"	22,9180	-0,1116
154	QUA	7.537,2828	8.134,1782	35,7286	58°32'14"	138°49'42"	38,5200	-0,2044
155	ARQ	7.534,8946	8.131,9157	35,8094	59°55'30"	140°12'58"	35,3540	-0,1236
156	ARQ	7.537,0875	8.132,1870	35,8340	57°10'33"	137°28'01"	36,7300	-0,0990
157	RAM	7.538,4022	8.134,1831	35,5885	57°08'33"	137°26'01"	39,1200	-0,3445
158	RAM	7.536,9999	8.134,0145	35,7810	58°46'15"	139°03'43"	38,2330	-0,1520
159	RAM-PAS	7.537,2095	8.132,0722	35,8105	56°55'07"	137°12'35"	36,7000	-0,1225
160	RAM	7.538,6250	8.132,2545	35,5873	55°15'52"	135°33'20"	37,6410	-0,3457
161	PAS	7.538,0710	8.132,1130	35,6411	55°50'29"	136°07'57"	37,2110	-0,2919
162	PAS	7.528,0472	8.134,1402	35,7954	71°40'30"	151°57'58"	34,5720	-0,1376
163	MUR	7.528,0252	8.138,3481	36,2260	73°40'16"	153°57'44"	38,5830	0,2930
164	MUR	7.537,8488	8.136,9454	35,7736	59°52'30"	140°09'58"	41,1870	-0,1594

Nome	Descrição	Norte	Este	Cota
E2	E	7.767.541,1246	368.102,8693	35,8026

Nome	Descrição	Norte	Este	Cota	Azimute	AH	DH	Desnível
165	ARQ	7.539,7673	8.106,4818	35,7846	110°35'32"	286°53'38"	3,8590	-0,0180
166	ARQ	7.537,5351	8.106,2356	35,7980	136°50'14"	313°08'20"	4,9210	-0,0046
167	RAM-PAS	7.540,6208	8.106,6913	35,6637	97°30'31"	273°48'37"	3,8550	-0,1389
168	RAM	7.541,6994	8.106,7308	35,5771	81°31'57"	257°50'03"	3,9040	-0,2255
169	RAM	7.542,1506	8.104,7871	35,5715	61°51'17"	238°09'23"	2,1750	-0,2311
170	RAM-PAS	7.541,3860	8.104,7109	35,6393	81°55'18"	258°13'24"	1,8600	-0,1633
171	TES	7.543,4590	8.112,8561	35,6780	76°50'36"	253°08'42"	10,2560	-0,1246
172	PAS	7.542,6251	8.111,9613	35,5945	80°37'42"	256°55'48"	9,2150	-0,2081

Nome	Descrição	Norte	Este	Cota
E2	E	7.767,541,1246	368.102,8693	35,8026

Nome	Descrição	Norte	Este	Cota	Azimute	AH	DH	Desnível
173	PAS	7.541,8521	8.100,4660	35,6630	286°50'30"	103°08'36"	2,5110	-0,1396
174	PAS	7.546,3882	8.100,9842	35,4314	340°17'45"	156°35'51"	5,5910	-0,3712
175	TES	7.541,1371	8.134,8503	35,6802	89°58'39"	266°16'45"	31,9810	-0,1224
176	PAS	7.547,9163	8.085,8698	35,5790	291°46'40"	108°04'46"	18,3060	-0,2236
177	PAS	7.551,9837	8.086,2434	35,6542	303°09'01"	119°27'07"	19,8580	-0,1484
178	TES	7.551,4618	8.085,5730	35,6922	300°51'53"	117°09'59"	20,1500	-0,1104
179	CXE	7.549,7831	8.086,1065	35,6211	297°19'04"	113°37'10"	18,8670	-0,1815
180	CXE	7.549,6485	8.086,9803	35,6237	298°12'43"	114°30'49"	18,0310	-0,1789
181	CXE	7.548,8628	8.086,9171	35,6263	295°52'39"	112°10'45"	17,7300	-0,1763
182	TES	7.544,1937	8.084,7981	35,6388	279°38'19"	95°56'25"	18,3300	-0,1638
183	PAS	7.540,2080	8.135,4494	35,6633	91°36'41"	267°54'47"	32,5930	-0,1393
184	PAS	7.537,5680	8.135,0655	35,7079	96°18'13"	272°36'19"	32,3920	-0,0947
185	CER	7.545,4893	8.113,0403	35,6812	66°46'27"	243°04'33"	11,0680	-0,1214
186	CX	7.543,4644	8.088,9547	35,6154	279°32'43"	95°50'49"	14,1100	-0,1872
187	CX	7.543,0099	8.088,9464	35,6287	277°42'41"	94°00'47"	14,0500	-0,1739
188	CX	7.542,9989	8.088,9388	35,6473	277°39'46"	93°57'52"	14,0560	-0,1553
189	CX	7.543,1490	8.087,6231	35,6459	277°33'49"	93°51'55"	15,3800	-0,1567
190	CX	7.543,2194	8.086,9949	35,6223	277°31'03"	93°49'09"	16,0120	-0,1803
191	CX	7.543,6385	8.087,0356	35,6218	279°01'17"	95°19'23"	16,0320	-0,1808
192	CXE	7.539,8140	8.130,1879	35,5304	92°44'48"	269°02'54"	27,3500	-0,2722
193	CXE	7.539,9309	8.129,4395	35,5376	92°34'20"	268°52'26"	26,5970	-0,2650
194	CXE	7.540,6023	8.129,4922	35,5374	91°07'26"	267°25'32"	26,6280	-0,2652
195	CXEN	7.538,6288	8.128,3363	35,5144	95°35'50"	271°53'56"	25,5890	-0,2882
196	CXE	7.539,3943	8.127,3873	35,5260	94°02'12"	270°20'18"	24,5790	-0,2766
197	CXE	7.539,4621	8.126,7305	35,5560	93°59'08"	270°17'14"	23,9190	-0,2466
198	CXE	7.540,0915	8.126,8140	35,5558	92°28'14"	268°46'20"	23,9670	-0,2468
199	PVE	7.541,0126	8.124,3430	35,6128	90°17'56"	266°36'02"	21,4740	-0,1898
200	PVE	7.541,4154	8.120,7100	35,6434	89°03'58"	265°22'04"	17,8430	-0,1592
201	CXEN	7.539,9197	8.116,4901	35,6734	95°03'19"	271°21'25"	13,6740	-0,1292
202	CXEN	7.540,5728	8.109,8114	35,8177	94°32'39"	270°50'45"	6,9640	0,0151
203	TES	7.544,8828	8.078,7028	35,6187	278°50'22"	95°08'28"	24,4570	-0,1839
204	ESC	7.544,1368	8.077,2125	35,8108	276°41'46"	92°59'52"	25,8330	0,0082
205	ESC	7.542,6875	8.077,0997	35,8396	273°28'14"	89°46'20"	25,8170	0,0370
206	ESC	7.542,7980	8.076,4944	36,1798	273°37'49"	89°55'55"	26,4280	0,3772
207	ESC	7.544,1318	8.076,5858	36,1624	276°31'37"	92°49'43"	26,4550	0,3598
208	RAM	7.543,1393	8.072,9621	36,1631	273°51'14"	90°09'20"	29,9750	0,3605
209	RAM	7.543,7888	8.066,6913	35,8268	274°12'42"	90°30'48"	36,2760	0,0242
210	RAM	7.545,1930	8.066,8131	35,8273	276°26'16"	92°44'22"	36,2850	0,0247
211	CXE	7.542,4636	8.083,4053	35,8453	273°56'07"	90°14'13"	19,5100	0,0427
212	CXE	7.542,5332	8.082,8949	35,8465	274°02'02"	90°20'08"	20,0240	0,0439
213	CXE	7.542,1290	8.082,8074	35,8466	272°51'58"	89°10'04"	20,0870	0,0440
214	CXE	7.543,5544	8.083,6160	35,6411	277°11'34"	93°29'40"	19,4060	-0,1615
215	CXE	7.543,5766	8.082,9789	35,6365	277°01'40"	93°19'46"	20,0410	-0,1661
216	CXE	7.543,8880	8.083,0198	35,6367	277°55'32"	94°13'38"	20,0410	-0,1659
217	PAS	7.545,9654	8.060,5503	35,6688	276°31'32"	92°49'38"	42,5950	-0,1338

Nome	Descrição	Norte	Este	Cota
1	M-01	7.767.540,4810	368.033,6080	36,3400
2	M-00	7.767.524,5670	368.058,1320	36,0710
3	E0	7.767.524,2430	368.043,8480	35,9990
4	MF	7.767.547,3250	368.033,4690	35,3850
5	MF	7.767.547,5770	368.032,9510	35,2630
6	MF	7.767.547,0600	368.026,1870	35,2860
7	MURO	7.767.546,8990	368.024,8360	35,4820
8	PASSEIO	7.767.548,8240	368.034,5230	35,3800
9	PISO_TATICO	7.767.547,4140	368.034,1840	35,5790
10	PISO_TATICO	7.767.548,7530	368.034,1510	35,3670
11	PISO_TATICO	7.767.548,0460	368.034,1090	35,4900
12	PASSEIO	7.767.558,8530	368.033,7700	33,6970
13	GRADIL	7.767.559,7550	368.032,3560	33,3830
14	GRADIL	7.767.558,3030	368.035,1450	34,1430
15	PV_CONCRET	7.767.559,2160	368.031,9220	33,3580
16	POSTE	7.767.563,3180	368.032,6170	32,6070
17	MF	7.767.562,9330	368.025,1100	32,4630
18	GRADIL	7.767.562,9390	368.032,4890	32,5610
19	MURO_DV	7.767.563,4430	368.033,5570	32,4830
20	MURO_PORTA	7.767.563,5460	368.032,7380	32,4790
21	PORTAO	7.767.563,9280	368.028,8210	32,4110
22	CX_ESGOTO	7.767.564,0590	368.031,9640	32,3280
23	CX_ESGOTO	7.767.564,0830	368.031,7820	32,3230
24	CX_ESGOTO	7.767.563,8420	368.031,7520	32,3550
25	MF	7.767.563,8580	368.032,6380	32,3160
26	MF	7.767.561,5650	368.032,1400	32,8660
27	MF	7.767.559,7220	368.032,1400	33,2170
28	MF	7.767.569,4010	368.034,8550	31,0710
29	MF	7.767.571,6450	368.036,2230	30,5490
30	MFP	7.767.574,8670	368.039,3950	29,6380
31	MURO	7.767.570,6800	368.037,5140	30,6070
32	MURO	7.767.574,1960	368.040,8410	29,8960
33	MURO	7.767.576,5120	368.043,2260	29,1730
34	MURO	7.767.577,4640	368.044,4150	29,0320
35	MF	7.767.576,9820	368.042,1030	29,1640
36	MF	7.767.578,6360	368.045,3230	28,7180
37	MF	7.767.580,7410	368.050,6290	28,2960
38	MURO	7.767.580,1580	368.052,6540	28,2250
39	MF	7.767.579,5830	368.047,5880	28,5090
40	MF	7.767.580,4900	368.050,2410	28,2830

Nome	Descrição	Norte	Este	Cota
41	MF	7.767.581,7660	368.055,8160	28,1840
42	MF	7.767.588,6120	368.055,8830	27,7780
43	POSTE_TRAN	7.767.588,8910	368.054,2410	27,6790
44	MF	7.767.588,8160	368.053,3700	27,6800
45	TESTADA	7.767.590,4050	368.054,1480	27,8700
46	MF	7.767.590,9200	368.049,5550	27,0760
47	MF	7.767.594,7820	368.045,3160	26,0440
48	MF	7.767.594,7070	368.045,3030	25,0800
49	TESTADA	7.767.594,8820	368.047,7050	26,5610
50	TESTADA	7.767.594,1220	368.047,0160	26,5540
51	TESTADA	7.767.602,9820	368.037,0640	23,8210
52	MF	7.767.602,5550	368.036,5520	23,8160
53	MF	7.767.598,2610	368.030,5930	24,1260
54	PVE	7.767.593,6510	368.029,2400	25,1300
55	ARVORE	7.767.593,6610	368.032,4690	25,4120
56	MF	7.767.598,2460	368.023,2950	23,8150
57	MURO	7.767.598,3240	368.021,7600	23,8520
58	MURO	7.767.587,5680	368.023,0790	26,7200
59	MF	7.767.586,5600	368.024,5020	26,7820
60	MF	7.767.585,4510	368.031,1510	27,1280
61	MF	7.767.576,9840	368.031,4410	29,4960
62	MF	7.767.576,3480	368.031,8530	29,7450
63	PVE	7.767.576,2360	368.032,7030	29,7460
64	PVE	7.767.575,8880	368.029,9790	29,7210
65	PV	7.767.572,1580	368.027,9660	30,5810
66	MF	7.767.580,0680	368.034,9860	29,1700
67	MF	7.767.582,9580	368.038,2910	28,5880
68	MF	7.767.586,1500	368.043,5070	27,7840
69	MF	7.767.587,0660	368.043,4620	27,4770
70	MF	7.767.587,6910	368.042,8960	27,2960
71	ARVORE	7.767.587,0640	368.041,1500	27,6090
72	PVE	7.767.586,8400	368.061,2190	27,9180
73	MF	7.767.588,7860	368.061,4430	27,9290
74	TESTADA	7.767.589,7180	368.063,0400	27,9990
75	MF	7.767.582,2280	368.062,9720	26,9420
76	MF	7.767.582,2480	368.067,1560	27,7280
77	MURO	7.767.580,6910	368.063,0030	27,9630
78	MF	7.767.581,4060	368.083,0730	27,4640
79	MURO	7.767.579,3910	368.084,1320	27,6390
80	PVA	7.767.583,1330	368.085,8700	27,4530

Nome	Descrição	Norte	Este	Cota
81	MF	7.767.588,0500	368.085,5100	27,3550
82	MF	7.767.580,4520	368.101,4650	27,0280
83	MURO	7.767.579,0540	368.101,4110	27,2400
84	MF	7.767.587,1440	368.102,6140	26,9590
85	TESTADA	7.767.588,1040	368.104,6820	27,2550
86	TESTADA	7.767.587,8940	368.123,0810	25,5040
87	TESTADA	7.767.588,7180	368.123,6540	25,1570
88	TESTADA	7.767.591,2770	368.123,1420	24,3320
89	MF	7.767.591,4170	368.123,8880	24,0220
90	PVE	7.767.591,5190	368.125,3740	24,0600
91	MF	7.767.589,3950	368.124,2980	24,5850
92	MF	7.767.588,1860	368.123,9990	25,0490
93	MF	7.767.586,9670	368.123,1380	25,4620
94	POSTE	7.767.587,3270	368.121,5140	25,7060
95	GRELHA	7.767.586,3690	368.122,2700	25,6400
96	GRELHA	7.767.586,6860	368.122,6030	25,5690
97	GRELHA	7.767.583,1070	368.126,5410	25,8390
98	GRELHA	7.767.582,6880	368.126,2110	25,8500
99	F	7.767.582,9230	368.126,2620	24,7400
100	F	7.767.586,0890	368.122,7060	25,3290
101	PVE	7.767.584,5550	368.123,6160	25,7510
102	MF	7.767.580,1750	368.124,0880	25,9810
103	MURO	7.767.578,4330	368.117,3810	26,5360
104	MF	7.767.580,2800	368.104,8820	26,8200
105	MURO	7.767.579,1010	368.104,8010	27,0410
106	MF	7.767.580,1380	368.123,8150	25,9640
107	PVA	7.767.582,3040	368.126,7490	25,8560
108	CERCA	7.767.579,0920	368.124,8340	26,3960
109	MF	7.767.580,8730	368.129,5740	26,1760
110	MF	7.767.580,6160	368.132,0810	26,5810
111	MF	7.767.579,3690	368.133,9930	27,1280
112	MF	7.767.578,1000	368.134,9290	27,5840
113	MF	7.767.575,4540	368.135,8190	28,3410
114	MF	7.767.571,7890	368.136,3310	29,1560
115	CERCA	7.767.572,4820	368.134,9740	29,2870
116	CERCA	7.767.576,8170	368.134,2810	27,8710
117	CERCA	7.767.578,3390	368.133,4210	27,4660
118	CERCA	7.767.579,0370	368.131,1830	26,7450
119	BLOQUETE	7.767.587,6180	368.128,9260	25,2290
120	BLOQUETE	7.767.590,5710	368.128,3290	24,4530

Nome	Descrição	Norte	Este	Cota
121	MF	7.767.595,0050	368.133,4700	24,0470
122	MF	7.767.595,6090	368.141,7440	25,3860
123	MF	7.767.595,7900	368.146,4400	25,6400
124	MF	7.767.588,8530	368.148,0110	26,3300
125	MF	7.767.586,1120	368.143,8270	26,6600
126	PVE	7.767.584,1740	368.140,6190	26,8530
127	MF	7.767.584,5090	368.142,5360	26,8890
128	POSTE	7.767.582,9690	368.142,3250	27,1790
129	MF	7.767.582,6940	368.142,1070	27,2230
130	TN	7.767.583,0880	368.143,6540	27,3110
131	GRELHA	7.767.579,2010	368.141,1440	27,8680
132	GRELHA	7.767.578,8330	368.141,1730	27,9350
133	GRELHA	7.767.578,8190	368.142,1720	27,9680
134	F	7.767.578,9580	368.141,3160	27,6010
135	F	7.767.578,8150	368.136,5220	27,3830
136	GRELHA	7.767.578,8780	368.136,0510	27,5490
137	GRELHA	7.767.578,5770	368.135,9570	27,6310
138	GRELHA	7.767.578,5980	368.136,9250	27,7170
139	GRELHA	7.767.578,5450	368.135,8660	27,5890
140	GRELHA	7.767.578,9340	368.135,7000	27,4800
141	GRELHA	7.767.578,8150	368.134,8870	27,3770
142	ASSOREADA	7.767.578,6350	368.135,2190	27,4190
143	ASSOREADA	7.767.578,7700	368.136,2000	27,5020
144	MF	7.767.566,8190	368.142,4320	30,4280
145	TN	7.767.567,0640	368.144,2400	30,5680
146	MF	7.767.565,6800	368.136,6870	30,5140
147	CERCA	7.767.567,0860	368.135,5270	30,7740
148	CERCA	7.767.554,4920	368.136,0010	32,6930
149	MF	7.767.552,2500	368.137,5240	32,7660
150	MURO_DV	7.767.552,1730	368.135,0010	34,7210
151	CR	7.767.553,3400	368.134,3940	34,4270
152	CR	7.767.554,3530	368.127,3410	34,6600
153	MURO	7.767.553,1280	368.126,4280	34,7830
154	MURO_DV	7.767.554,1350	368.116,9800	34,7140
155	CR	7.767.555,4390	368.118,3610	34,9030
156	CR	7.767.562,0910	368.117,7900	33,2970
157	CR	7.767.564,2420	368.117,7760	32,5640
158	MURO	7.767.565,8510	368.117,3230	32,3220
159	PE	7.767.564,3500	368.119,3910	31,9430
160	CR	7.767.566,1800	368.118,2260	32,0080

Nome	Descrição	Norte	Este	Cota
161	CR	7.767.566,1400	368.123,8330	31,4410
162	CR	7.767.566,8260	368.133,7710	31,2940
163	PE	7.767.556,9440	368.119,5490	32,0300
164	PE	7.767.556,6020	368.120,9110	32,0980
165	PE	7.767.555,8740	368.126,4750	31,7320
166	PE	7.767.554,4310	368.135,2490	32,5250
167	PVA	7.767.551,0850	368.141,4630	32,9930
168	MFP	7.767.547,0030	368.143,9870	33,5060
169	TN	7.767.547,2430	368.145,7830	33,4980
170	PE	7.767.553,3230	368.137,1500	32,7150
171	PVE	7.767.539,9890	368.143,9180	34,1850
172	PV	7.767.535,5740	368.141,5360	34,6810
173	MURO	7.767.534,6400	368.137,6160	36,0020
174	CR	7.767.534,8580	368.138,3840	35,8960
175	MF	7.767.534,7160	368.139,5920	34,6580
176	MF	7.767.535,6910	368.145,4530	34,6070
177	TN	7.767.535,7960	368.147,0830	34,8450
178	MURO	7.767.523,9110	368.139,1060	36,6430
179	CR	7.767.523,8400	368.139,8700	36,5760
180	MF	7.767.524,3470	368.147,0300	35,3940
181	TN	7.767.524,2800	368.148,7020	35,4600
182	MF	7.767.523,6780	368.141,2450	35,4740
183	TN	7.767.502,7740	368.154,7910	36,5680
184	MF	7.767.502,3300	368.149,9690	36,6720
185	MURO	7.767.499,3970	368.140,0690	37,1590
186	MF	7.767.499,3070	368.143,6580	36,7200
187	PV	7.767.500,6570	368.145,2160	36,7000
188	PVA	7.767.499,1030	368.147,7040	36,7640
189	EDIF	7.767.563,4620	368.117,1720	32,7510
190	EDIF	7.767.555,3340	368.117,0240	34,5900
191	PE	7.767.569,7760	368.119,1270	27,6530
192	PE	7.767.568,7870	368.123,4440	27,3720
193	PE	7.767.569,4670	368.130,0930	27,3070
194	PE	7.767.571,6840	368.133,2270	27,4290
195	CR	7.767.558,1200	368.086,4060	34,7900
196	MURO	7.767.557,8130	368.086,3510	34,8090
197	MURO	7.767.556,9460	368.091,8700	34,9150
198	CR	7.767.557,7640	368.092,0650	34,7880
199	CR	7.767.558,9590	368.095,5390	34,1660
200	CR	7.767.561,9060	368.097,3500	33,0000

Nome	Descrição	Norte	Este	Cota
201	CR	7.767.562,9810	368.101,3350	32,9110
202	CR	7.767.563,0020	368.105,9950	32,9480
203	MURO	7.767.555,2380	368.107,4560	34,2990
204	EDIF	7.767.563,7190	368.112,7330	34,0090
205	CR	7.767.559,4480	368.072,7910	34,1290
206	MURO	7.767.559,1680	368.072,7640	34,1180
207	CR	7.767.563,8040	368.071,3760	32,9190
208	CR	7.767.564,7370	368.064,9360	32,6490
209	CR_EDIF_MUR	7.767.566,6910	368.053,4980	32,5850
210	MURO_DV	7.767.561,2100	368.053,6440	34,1970
211	PE	7.767.566,0950	368.073,7800	29,1400
212	MURO	7.767.566,3470	368.073,8870	29,0120
213	MURO_ED	7.767.568,5480	368.073,9900	28,8130
214	EDIF	7.767.568,3110	368.082,4460	28,3160
215	MURO	7.767.567,2100	368.087,8540	28,3550
216	EDIF	7.767.569,7770	368.088,5330	27,7530
217	EDIF	7.767.569,7960	368.095,3350	27,8930
218	MURO	7.767.567,8810	368.095,9210	28,1300
219	EDIF	7.767.565,7560	368.097,8210	28,5230
220	EDIF	7.767.566,0940	368.105,5340	28,5090
221	PE	7.767.564,6250	368.105,9310	28,7830
222	PE	7.767.565,0460	368.102,5400	28,4680
223	PE	7.767.565,1270	368.096,9940	28,6500
224	PE	7.767.564,3320	368.096,0560	29,0840
225	PE	7.767.563,2290	368.096,0700	29,7830
226	PE	7.767.559,8560	368.093,8860	31,4380
227	PE	7.767.560,3700	368.089,5130	30,8690
228	PE	7.767.562,4790	368.084,1010	29,8080
229	PE	7.767.558,5980	368.079,8280	31,9510
230	PE	7.767.561,6100	368.075,6330	30,5730
231	TN_PE	7.767.565,3240	368.079,6920	29,2420
232	TN_PE	7.767.564,8380	368.086,8690	28,6640
233	TN_PE	7.767.564,9360	368.095,5010	28,6040
234	PE	7.767.567,3370	368.067,9910	28,0760
235	PE	7.767.567,0570	368.065,1250	28,8410
236	PE	7.767.567,0470	368.062,6470	29,3600
237	PE	7.767.568,1070	368.060,3800	29,6590
238	PE_MURO	7.767.567,7580	368.053,5470	29,0510
239	POSTE	7.767.589,0530	368.086,9590	27,5120
240	GRADIL	7.767.555,1670	368.071,8660	35,1510

Nome	Descrição	Norte	Este	Cota
241	MURO_CR	7.767.558,8590	368.072,7180	34,8970
242	CR	7.767.557,4450	368.075,5630	34,9470
243	CR	7.767.556,9000	368.081,3870	35,0790
244	MURO_CR	7.767.557,7540	368.083,5250	35,1020
245	GRADIL	7.767.552,8930	368.092,4800	35,2220
246	CX_LAC	7.767.552,5020	368.093,2890	35,2060
247	CX_LAC	7.767.552,4130	368.093,9630	35,2430
248	CX_LAC	7.767.551,8520	368.094,0090	35,2610
249	CX_LAC	7.767.549,1910	368.095,6170	35,4420
250	CX_LAC	7.767.549,1280	368.096,4390	35,3930
251	CX_LAC	7.767.548,2130	368.096,4790	35,4840
252	GRADIL	7.767.547,9070	368.092,3810	35,4060
253	CX_LAC	7.767.549,2270	368.094,9490	35,3890
254	CX_LAC	7.767.548,3260	368.094,8700	35,3450
255	CX_LAC	7.767.549,3420	368.093,9060	35,3350
256	PORTAO	7.767.546,9080	368.099,6700	35,4370
257	PORTAO	7.767.546,8840	368.100,8640	35,4820
258	MURO	7.767.555,5690	368.101,3250	35,2650
259	GRADIL	7.767.545,5990	368.112,9710	35,7340
260	PASSEIO	7.767.547,8880	368.112,5560	35,6780
261	EDIF	7.767.547,0950	368.113,2540	35,7400
262	MURO	7.767.553,8710	368.116,4400	35,1350
263	MURO	7.767.551,9980	368.134,7750	35,0570
264	EDIF	7.767.544,7500	368.135,2130	35,7130
265	PASSEIO	7.767.545,3680	368.135,8020	35,6210
266	GRADIL_PORT	7.767.551,5090	368.057,0330	35,6810
267	GRADIL_PORT	7.767.551,3780	368.058,2930	35,6550
268	N	7.767.553,9740	368.057,7100	35,3440
269	N	7.767.549,7090	368.057,5560	35,8250
270	CX_LAC	7.767.555,6920	368.060,5110	35,2470
271	CX_LAC	7.767.555,6760	368.061,1620	35,2550
272	CX_LAC	7.767.556,3850	368.061,1760	35,2540
273	PASSEIO	7.767.545,2970	368.076,7480	36,1050
274	PASSEIO	7.767.552,7540	368.077,4260	35,7600
275	TN	7.767.552,7170	368.077,4590	35,4650
276	PASSEIO	7.767.548,7560	368.077,0610	35,6740
277	PASSEIO	7.767.550,3660	368.060,9380	35,7130
278	ARVORE	7.767.558,3610	368.053,3370	34,9460

Título:

Monografia BASE

Folha: 01/01

Data: 23/12/2019

Dados de Localização

Localidade: EEEF Taquara I

Município: Serra

Estado: Espírito Santo

Coordenadas

DATUM SIRGAS 2000 FUSO 24 MC -39°

MODELO GEOIDAL: MAPGEO2015

UTM (Universal Transversa
de Mercator)

Geográficas

Norte: 7.767.540,481 Latitude(gms)-20° 11'06,1292,

Este: 368.033,608 Longitude(gms)-40°15'46,6916,

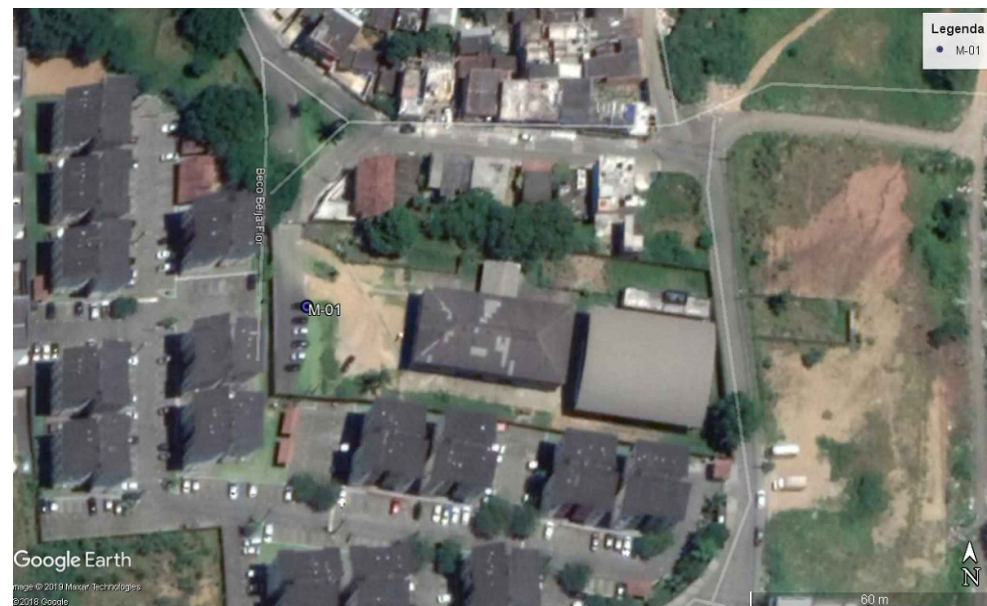
**Cota: 36,34 **Altitude Ortométrica (m)

Descrição: Placa estampada em alumínio, usado para Levantamento Topográfico Planialtimétrico Cadastral.

*Coordenadas SIRGAS obtidas através da medição de vetores GPS referenciado ao SGB(Sistema Geodésico Brasileiro).

Confere com Geoprocessamento

Croqui de Localização



Itinerário: EEEF Taquara I, Serra – ES.

Titulo:

Monografia BASE

Folha: 02/02

Data: 23/12/2019



Sumário do Processamento do marco: M1

Início: AAAA/MM/DD HH:MM:SS,SS	2019/12/19 11:12:03,00
Fim: AAAA/MM/DD HH:MM:SS,SS	2019/12/19 14:17:29,00
Modo de Operação do Usuário:	ESTÁTICO
Observação processada:	CÓDIGO & FASE
Modelo da Antena:	CHCI80 NONE
Órbitas dos satélites:¹	RÁPIDA
Frequência processada:	L3
Intervalo do processamento(s):	1,00
Sigma² da pseudodistância(m):	5,000
Sigma da portadora(m):	0,010
Altura da Antena³(m):	1,760
Ângulo de Elevação(graus):	10,000
Resíduos da pseudodistância(m):	2,04 GPS 2,95 GLONASS
Resíduos da fase da portadora(cm):	1,07 GPS 1,08 GLONASS

Coordenadas SIRGAS

	Latitude(gms)	Longitude(gms)	Alt. Geo.(m)	UTM N(m)	UTM E(m)	MC
Em 2000.4 (É a que deve ser usada) ⁴	-20° 11' 06,1292"	-40° 15' 46,6916"	28,97	7767540.481	368033.608	-39
Na data do levantamento ⁵	-20° 11' 06,1215"	-40° 15' 46,6939"	28,97	7767540.717	368033.539	-39
Sigma(95%)⁶ (m)	0,001	0,003	0,005			
Modelo Geoidal	MAPGEO2015					
Ondulação Geoidal (m)	-7,37					
Altitude Ortométrica (m)	36,34					

Precisão esperada para um levantamento estático (metros)

Tipo de Receptor	Uma frequência		Duas frequências	
	Planimétrico	Altimétrico	Planimétrico	Altimétrico
Após 1 hora	0,700	0,600	0,040	0,040
Após 2 horas	0,330	0,330	0,017	0,018
Após 4 horas	0,170	0,220	0,009	0,010
Após 6 horas	0,120	0,180	0,005	0,008

¹ Órbitas obtidas do International GNSS Service (IGS) ou do Natural Resources of Canada (NRCAN).

² O termo "Sigma" é referente ao desvio-padrão.

³ Distância Vertical do Marco ao Plano de Referência da Antena (PRA).

⁴ A coordenada oficial na data de referência do Sistema SIRGAS, ou seja, 2000.4. A redução de velocidade foi feita na data do levantamento, utilizando o modelo VEMOS em 2000.4.

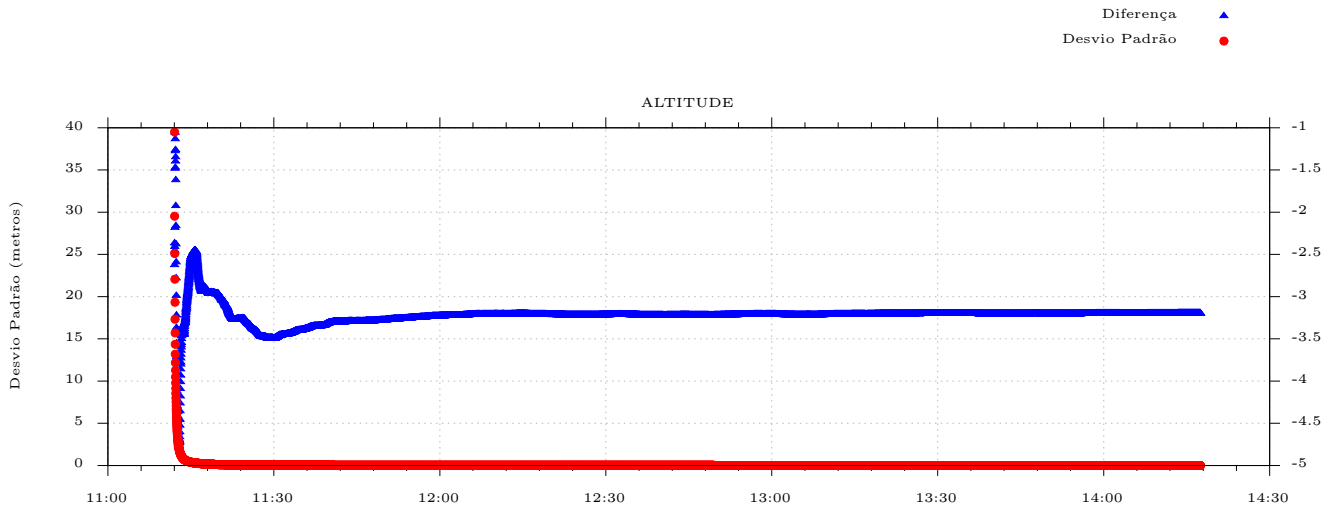
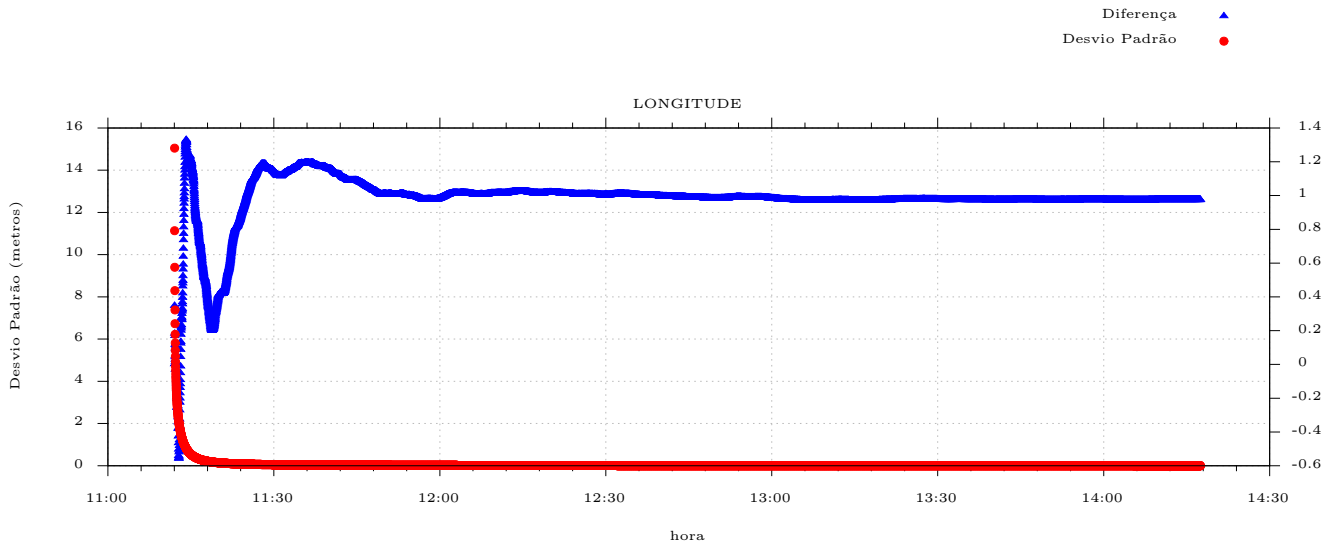
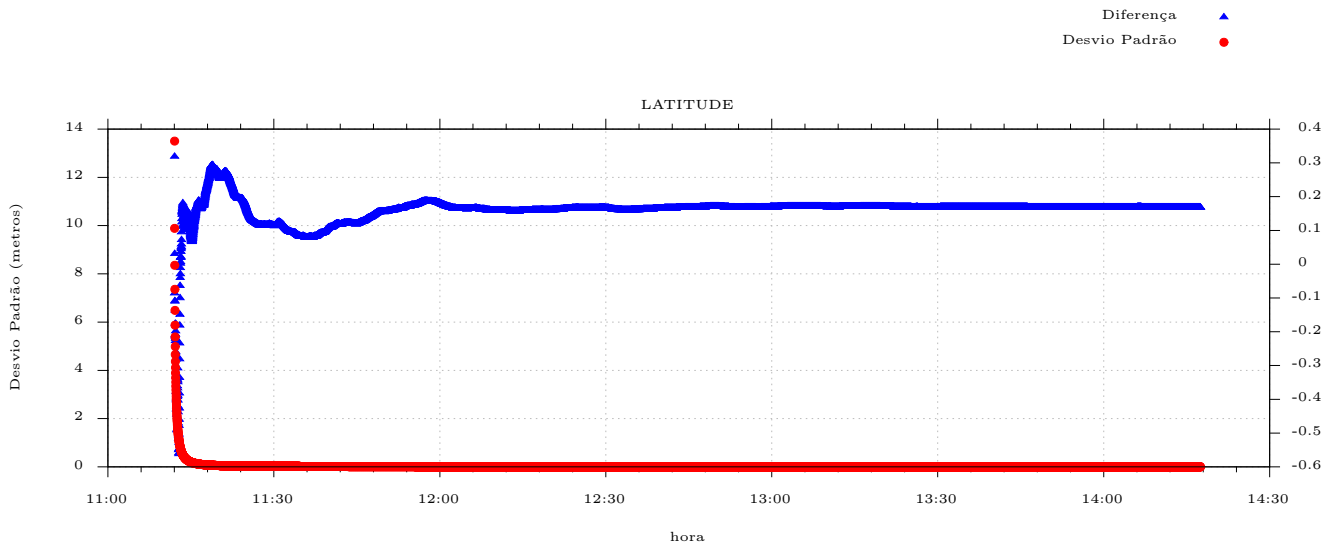
⁵ A data de levantamento considerada é a data de início da sessão.

⁶ Este desvio-padrão representa a confiabilidade interna do processamento e não a exatidão da coordenada.

Os resultados apresentados neste relatório dependem da qualidade dos dados enviados e do correto preenchimento das informações por parte do usuário. Em caso de dúvidas, críticas ou sugestões contate: ibge@ibge.gov.br ou pelo telefone 0800-7218181.

Este serviço de posicionamento faz uso do aplicativo de processamento CSRS-PPP desenvolvido pelo Geodetic Survey Division of Natural Resources of Canada (NRCAN)

Processamento autorizado para uso do IBGE.



CAPTURADO POR	
ANDRÉIA SEGLIA TEC DE EDIFICACOES SEDU - GERFE	
DATA DA CAPTURA	01/04/2020 18:04:18 (HORÁRIO DE BRASÍLIA - UTC-3)
VALOR LEGAL	ORIGINAL
NATUREZA	DOCUMENTO NATO-DIGITAL

ASSINARAM O DOCUMENTO	
WILSON RODRIGUES GONÇALVES ARQUITETO COORD SR SEDU - GERFE Assinado em 01/04/2020 10:04:38 Documento original assinado eletronicamente, conforme art. 6, § 1º, do Decreto 4410-R/2019.	
MOISÉS BRITO SOBRINHO ENG COORD CIVIL SR SEDU - GERFE Assinado em 31/03/2020 18:05:08 Documento original assinado eletronicamente, conforme art. 6, § 1º, do Decreto 4410-R/2019.	
FELIPE DE BRITO AURÉLIO ENG COORD ELETRIC SR SEDU - GERFE Assinado em 01/04/2020 15:43:39 Documento original assinado eletronicamente, conforme art. 6, § 1º, do Decreto 4410-R/2019.	
EDSON DE OLIVEIRA PIRES ENG COORD GERAL MAST SEDU - GERFE Assinado em 01/04/2020 18:04:17 Documento original assinado eletronicamente, conforme art. 6, § 1º, do Decreto 4410-R/2019.	

A disponibilidade do documento pode ser conferida pelo link <https://e-docs.es.gov.br/documento/registro/2020-DQDNCX>



Consulta via leitor de QR Code.